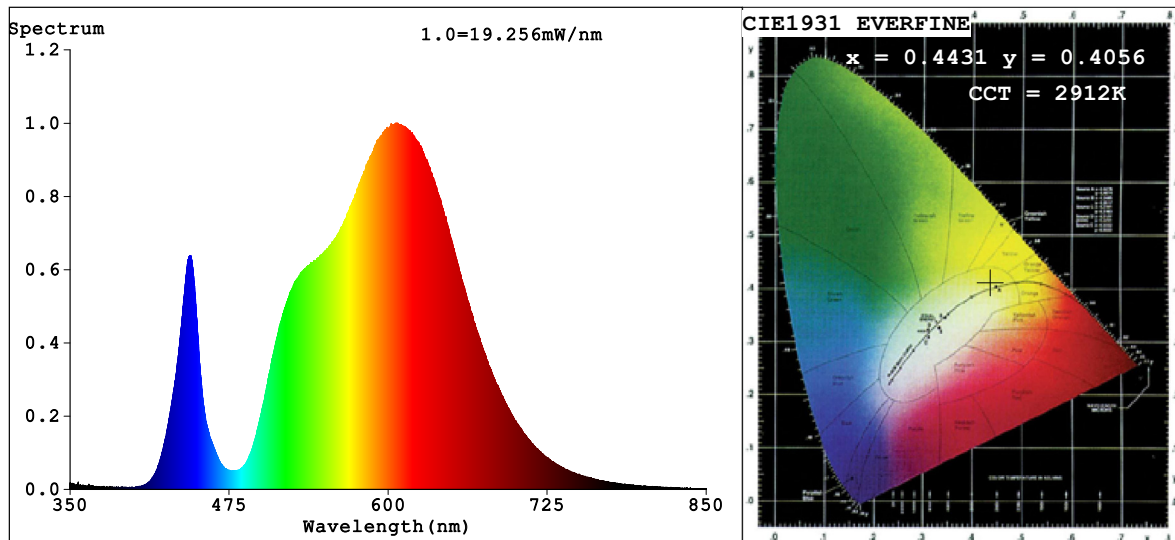


Spectrum Test Report



Color Parameters:

Chromaticity Coordinate: $x=0.4431$ $y=0.4056$ $u'=0.2539$ $v'=0.5229$

$CCT=2912K$ ($Duv=-0.0002$) Dominant WL: $\lambda_d = 583.3nm$ Purity=54.7%

Ratio: R=23.4% G=75.3% B=1.3%; Peak WL: $\lambda_p = 607.2nm$ FWHM=144.8nm

Render Index: $R_a=80.5$ CRI=74.2 TM30: $R_f=75$ $R_g=101$

R1 =81 R2 =85 R3 =88 R4 =82 R5 =79 R6 =80 R7 =85

R8 =65 R9 =16 R10=65 R11=82 R12=59 R13=81 R14=93 R15=75

Photo Parameters:

Flux = 958.8 lm Eff. : 81.21 lm/W $\Phi_e = 2.977 W$

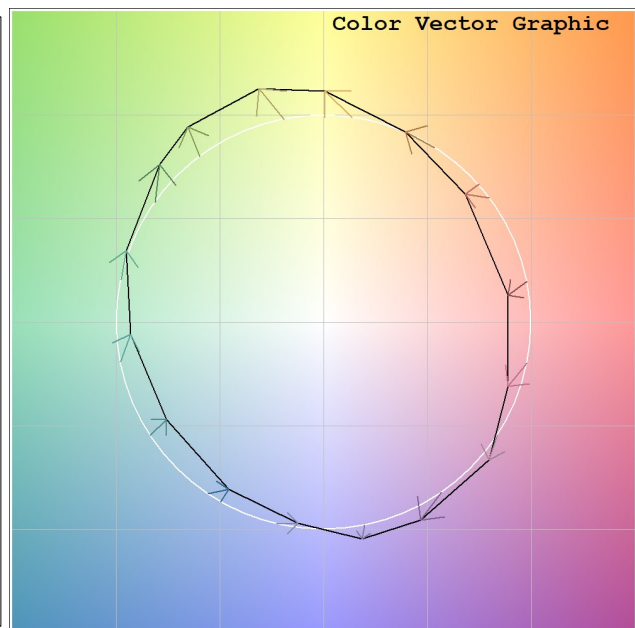
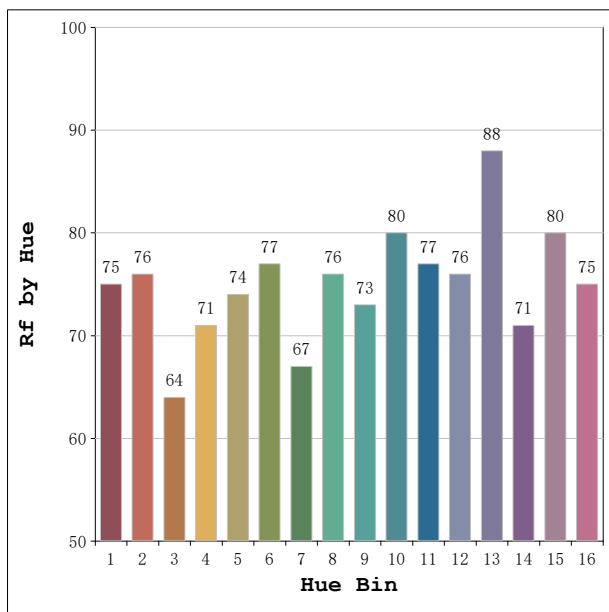
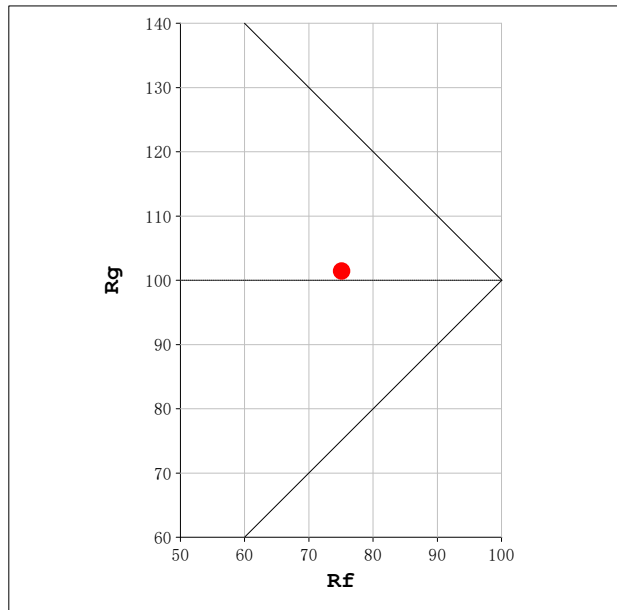
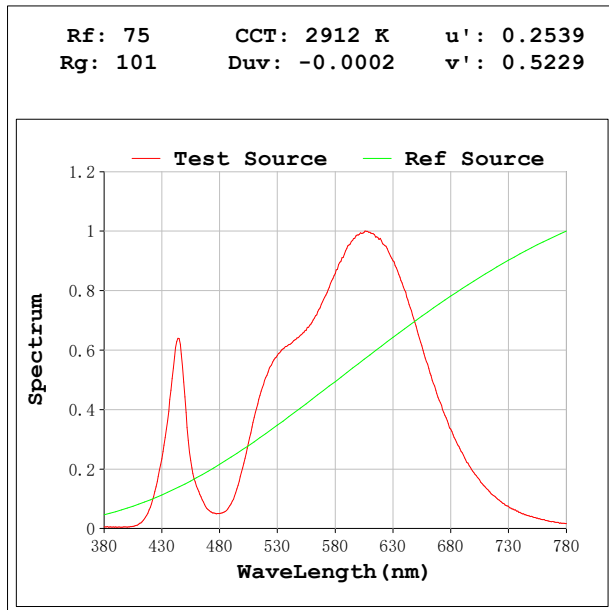
Electrical parameters:

V = 230.08 V I = 0.05660 A P = 11.81 W PF = 0.9066

Status: Integral T = 1250 ms $I_p = 44561$ (68%)

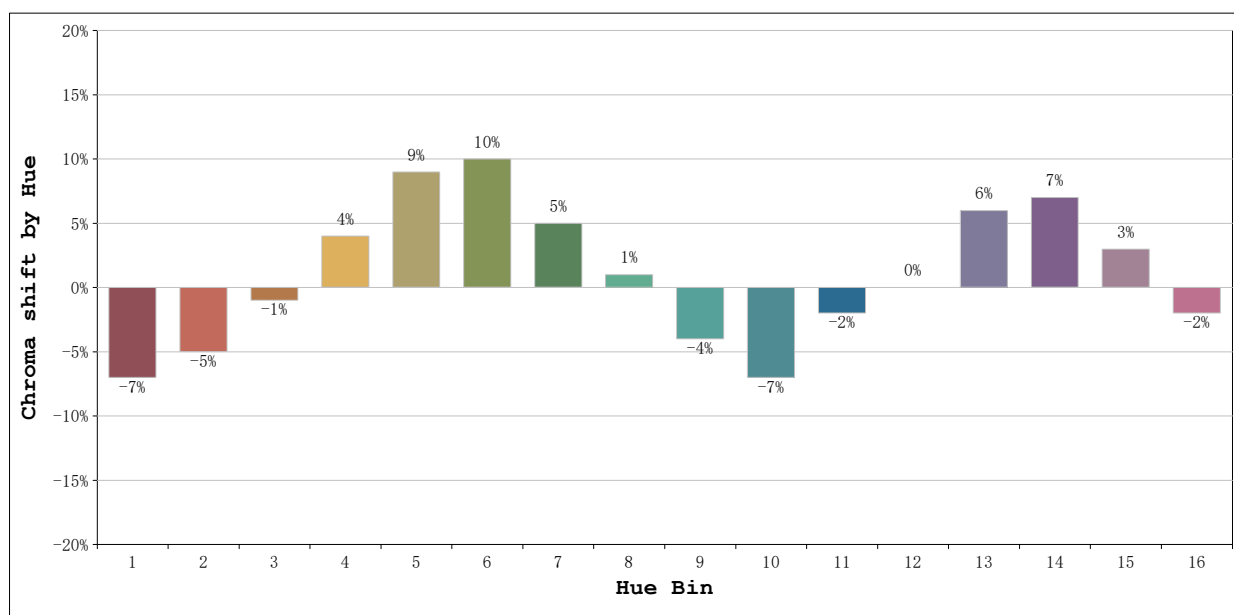
Model:Ecoled Infinity Cob
 Tester:Sergio Carneros
 Temperature:20Deg
 Manufacturer:Luz Negra

Number: 34.071 Roll to Roll
 Date:2026-03-25 09:59:25
 Humidity:50%
 Remarks:100cm de tira flexible



Model:Ecoled Infinity Cob
 Tester:Sergio Carneros
 Temperature:20Deg
 Manufacturer:Luz Negra

Number: 34.071 Roll to Roll
 Date:2026-03-25 09:59:25
 Humidity:50%
 Remarks:100cm de tira flexible



			Graphic shift(%)	
Hue Bin	Hue Angle	Rf	Chroma	Hue
1	0.0° - 22.5°	82	-7	-3
2	22.5° - 45.0°	85	-5	4
3	45.0° - 67.5°	77	-1	11
4	67.5° - 90.0°	81	4	10
5	90.0° - 112.5°	84	9	7
6	112.5° - 135.0°	84	10	-1
7	135.0° - 157.5°	76	5	-11
8	157.5° - 180.0°	85	1	-8
9	180.0° - 202.5°	84	-4	-6
10	202.5° - 225.0°	85	-7	0
11	225.0° - 247.5°	83	-2	10
12	247.5° - 270.0°	82	0	8
13	270.0° - 292.5°	89	6	0
14	292.5° - 315.0°	85	7	-7
15	315.0° - 337.5°	82	3	-10
16	337.5° - 360.0°	80	-2	-9

Model:Ecoled Infinity Cob
 Tester:Sergio Carneros
 Temperature:20Deg
 Manufacturer:Luz Negra

Number: 34.072 Roll to Roll
 Date:2026-03-25 09:46:46
 Humidity:50%
 Remarks:100cm de tira flexible